

Access Information for *The Loss Adjusters*

The Loss Adjusters

Open to the public 26 April – 28 June 2015

Presented on Portland by Artangel in association with b-side

Address 52 Easton Street, Easton, Portland, Dorset, DT5 1BT

Open 26 April to 28 June 2015

Opening Times

16 May to 28 June 2015

Saturday & Sunday 12 – 6pm

Project Webpage: http://www.artangel.org.uk/projects/2015/end_matter

Advance Information

For additional information about accessibility, the nature of the project, and its interpretation you are welcome to call us:

Artangel Office, open Monday to Friday, 10am to 6pm: 020 7713 1400.

The Loss Adjusters Front of House, staffed during opening times: 07530 307318

Artangel's team will do whatever is possible to meet your access and/or communication needs.

We are by request able to send copies of printed information about the work to visitors in advance.

Project Description

Katrina Palmer's *The Loss Adjusters* is artwork consisting of written material and soundtracks. The audio consists of three sound files which have been conceived to be listened to at specific locations on the course of a circular route across the Isle of Portland. The audio has a running time of 30 minutes.

Katrina Palmer's Artangel commission also consists of a book 'End Matter', which contains related documents, stories and investigations written by the artist; and a radio programme 'The Quarryman's Daughters' that will be broadcast on Radio 4 in Autumn 2015.

Further information about the project and associated events is available on our website at www.artangel.org.uk/projects/2015/end_matter

The book can be purchased onsite at 52 Easton Street for £8, cash only, and from Book Works: <http://www.bookworks.org.uk/>

We strongly advise visitors to download the audio files for *The Loss Adjusters* to a mobile device (mobile phone, MP3 player, tablet) from our website in advance of their visit, and to bring this device and a set of headphones with them to Portland. For those unable to do this, MP3 players and headphones will also be available to borrow from at 52 Easton Street.

Getting to 52 Easton Street, Portland

By Public Transport

The nearest train station is Weymouth, which served is by South West trains from London Waterloo, and Bristol. Weymouth Station has step free access.

The Route 1 bus runs from Weymouth station departing from Kings Statue (North-bound) stop on the Esplanade every 10 – 20 minutes. Alight at Grove Corner and walk back down Easton Street to number 52, located on the East side of the street.

A map of local bus routes is available for download here:

<https://www.dorsetforyou.com/travel-dorset/bus/bus-stops-and-routes-in-Dorset>. Local buses are not wheelchair accessible.

There are no traffic lights, dropped kerbs or tactile paving on Easton Street.

By Road or Taxi

The drive from Weymouth to Easton on Portland takes approximately 20 minutes. There is a taxi rank immediately outside the station.

Car Parking

There is a free long-stay car park in Easton with a capacity of 26 spaces. The postcode is DT5 2BJ. There are further free car parks elsewhere on Portland. A map of all of these is available from <https://www.dorsetforyou.com/travel-dorset/roads-and-driving/parking/car-parks-in-dorset/map>

Location

The work begins and ends at an empty shopfront and office at 52 Easton Street Portland DT5 1BT. This building is staffed during project opening hours and assistance in accessing the work and understanding the route is available from an Artangel representative.

From this location, visitors may borrow headphones and MP3 players which should be returned at the end of the walk. The deposit of a credit card or equivalent item may be requested against the loan. Printed information, including a map of the route, will also be provided at this site or can be requested advance from the Artangel Office.

Access to 52 Easton Street is through the front door via a single step from street level. The doorway has a raised threshold and is 90 cm wide.

The interior spaces are dimly lit by fluorescent lights and the windows are blacked out. All three rooms have sections of carpeting laid on them which create an uneven surface underfoot. One room is accessible only via a small staircase of three steps with a handrail.

An invigilator will be stationed in the front room of the Loss Adjuster's office. They will be available to provide assistance in accessing the audio.

Route of Walk

The experience of listening to the audio work is intended to begin at 52 Easton Street where three rooms on the ground floor are open to visitors.

The route then heads north up Easton Street before turning onto a public footpath. The route will be marked by red indicators stencilled onto stones.

The second and third audio files are to be listened to at points indicated on the map. The walk is self-guided, with some way-finding along the route. The duration of the walk will vary but it is anticipated it will take most visitors around 60 minutes, including time to stop and listen to the audio pieces.

The terrain varies a great deal throughout the walk. We recommend visitors bring appropriate footwear for hiking and prepare for the possibility of wet weather conditions. Between 52 Easton Street and Listening Point 2, some sections are on pavement, but much of the walk follows narrow grass and gravel footpaths. There are several instances where the path becomes rocky and muddy and where visitors will need to climb small, but steep hills. Between Point 2 and Point 3, the walk passes along a narrow and overgrown path near the fenced off edge of a quarry and through the local cemetery. The last section of the circular route, between Point 3 and 52 Easton, runs alongside and across Wide Street, a busy road with no traffic lights, and along a path used by industrial vehicles serving the quarry. Please see attached images for more detailed information.

Assistance animals

Assistance animals can be accommodated within the venue and along the walk.

Interpretation and supplementary images

An information leaflet about Katrina Palmer's work and this project is available onsite and copies can also be obtained in advance from our website as a PDF or in alternative formats by contacting us on 020 7713 1400.

Toilets

There are no toilet facilities available onsite at this project. The nearest public toilets are located in Easton Gardens, south of Easton Street, accessed from Easton Square (postcode reference: DT5 1BX). These include a disabled access toilet (with radar key).

Images of The Loss Adjuster's office

View of from West side of the road 52 Easton Street



Step into 52 Easton Street



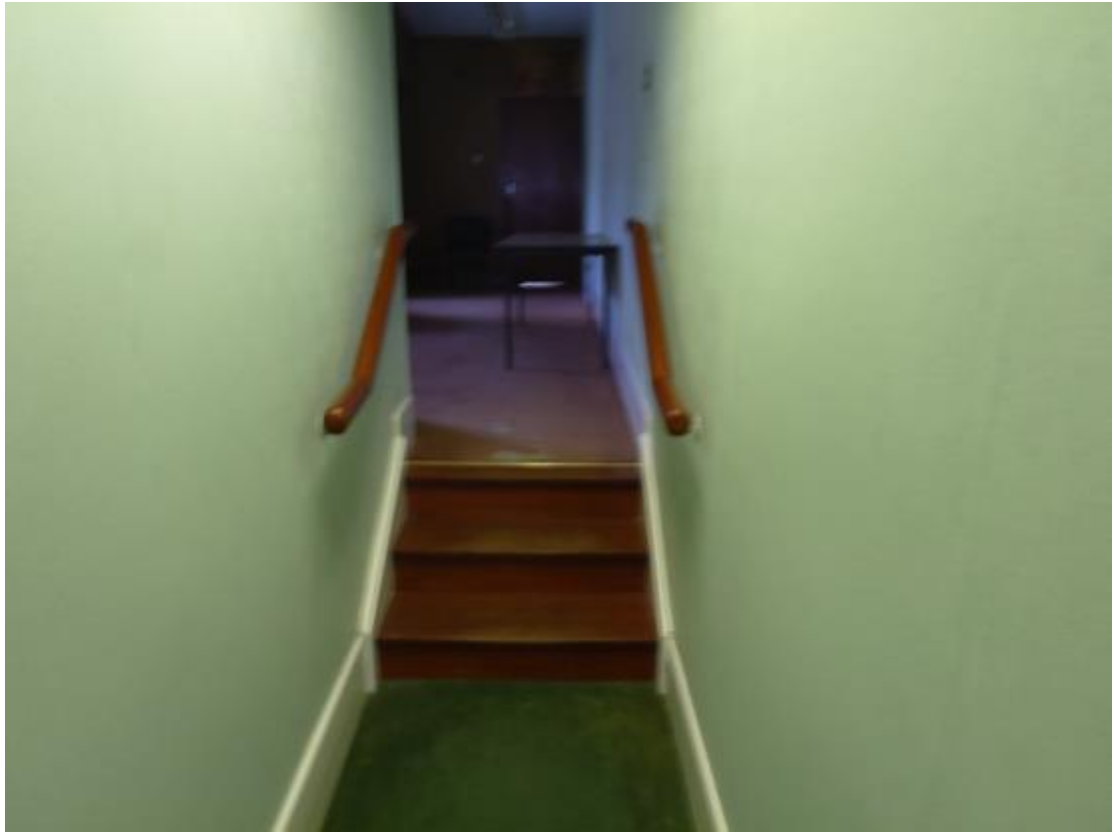
Door of 52 Easton Street from the inside



Carpeting in the front room of 52 Easton Street



Stairs to the back room of 52 Easton Street



Walk between 52 Easton Street and Listening Point 1











Walk between Listening Point 2 and Listening Point 3









Walk between Listening Point 3 and 52 Easton Street









