

# b-side festival

flip the switch

10 days of live art, visual art,  
sound, film and installation

5 - 14 september 2014  
portland, dorset



FREE

## In memory of Joe Stevens

This year's festival is dedicated to artist Joe Stevens, a dear friend and colleague who passed away in July.

Joe was a talented artist whose generosity of spirit shone through in both his life and his work in sound, moving image and photography. His work was people focused, often investigating notions of place. He worked closely with history and archives, and documenting the work of others through initiatives such as his Creative Conversations podcasts and his intergenerational work, Free Time, for digital:works, which creatively focused young and older minds alike, bringing a local community together.

In 2012 Joe made a visually delicate and typically thoughtful piece for b-side, Parallels and Meridians, and it was in talking about his work to the festival audience, that the depth and sincerity of Joe's work was truly appreciated.

Joe's kindness and intuition made for beautiful work regardless of whether you worked with him as fellow artist, project manager, collaborator or participant in one of his projects. He will be sadly missed by the arts community, by the many audiences who have been touched by his work and especially by us at b-side.

**Welcome to the 4th b-side festival, held exclusively on the intriguing Isle of Portland.**

b-side has commissioned national and international Artists to make work in response to Portland, UK. You can expect an eclectic mix of visual art, text, sound, installation and live art. Artists have explored the island's heritage, cultural history and local taboos as well as Portland's special ecology and geology to bring you their unique interpretation of place.

We have curated a programme of original work: sometimes poignant or challenging, sometimes celebratory and frequently witty. You will find this work on footpaths,

in a living room, a library, a cafe, within a prison wall, at bus stops, in a church and more traditionally, in a gallery and theatre. There is a wealth of events to experience and participate in: including a mass night time bike ride, cabaret, walks, film screenings and a shed-based communal reading experience!

If you would like to join the conversation about art, the island and how hosts and visitors alike interpret and understand the landscape, then look out for the Art Confessional and Talkaoke. Please also take the opportunity to talk to the b-side team and Artists, many of whom you will find at the venues.

We would like to offer our thanks to the many groups and individuals who have participated or supported the Artists, some of whom have been in residence for up to a year making strong links with islanders, local industry and academics. b-side presents a unique and varied portrait of the island. We hope you will agree. Have a great festival!



**Pick up a free b-side map at all festival sites and venues.**



**Alan Rogers**  
Executive Director



**Sandy Kirkby**  
Festival Producer



**Rosie Russell**  
Youth Programme Producer



**Julie Penfold**  
Curator



**Amanda Wallwork**  
Curator



**Sally Watkins**  
Curator



**Jack Byford**  
Production & Marketing Intern



**Sandy Hatcher**  
Volunteer Coordinator



Supported by  
**ARTS COUNCIL ENGLAND**

# WELCOME





# Agnieszka Kozłowska 22 17

Commissioned by b-side



## Re-presencing the island INSTALLATION FREE Photographs from and out of Portland

**Location #1 Date & Times:** 5 – 14 September / 11am – 5pm daily

**Location #1:** Stone Fisherman's Hut, Durdle Pier, East Weares (follow signs from the Church Ope Viewing Platform)

**Location #2 Date & Times:** 7 – 11 September / 10.30am – 4pm daily

**Location #2:** Portland Museum, 217 Wakeham, Portland, DT5 1HS

Agnieszka makes paper from local plants and exposes it for long periods of time in primitive cameras built out of rocks. Only the inherent light-sensitivity of plant substances is used. The title says it all, Agnieszka's 'photographs' are visual relics of a moment in time when light and landscape touch each other. The cameras were sited in multiple locations around the Island all pointing to the horizon, imprinting the paper inside with the subtle light differences between the sky and the sea.

The resulting installation invites the viewer to make a journey to a stone hut in the East Weares area and experience the landscape first hand. There they will discover the photographic artefacts that

not so much depict as embody the places out of which they were made. A film screened in the hut gives a glimpse of the artist's process of creating the works. Alternatively, see a small installation in Portland Museum, Wakeham.

**Guidance:** Agnieszka's work is situated in and around an old stone fisherman's hut near Durdle Pier on the east side of the island. Follow the signs from Church Ope viewing platform, near Rufus Castle. The walk takes 25 minutes along a rough and winding path. We recommend wearing suitable footwear. The site is not accessible to those with limited mobility.

### A Wild Weares walk from Church Ope to East Weares EVENT FREE

**Date:** Tuesday 9 September, 11am – 1pm

**Date:** Sunday 14 September, 10 am – 12pm

**Meet:** Church Ope Viewing Platform, near Rufus Castle

Join Portland Ranger Lynn Cooch for a late summer stroll, explore the wild weares and discover a part of the island you may not know. A unique tumbled landscape rich in history and wildlife and a chance to meet b-side artist Agnieszka Kozłowska and visit her film and unique photographic works installed around the cliff edge stone fisherman's hut. The walk involves a steep climb down to the weares, following uneven and rocky pathways.





# Alex Hartley 2

Portland Erratics **INSTALLATION** **FREE**

## Sculptural installation

**Date & Times:** 5 – 14 September

**Location:** On the quayside between Portland Marina and Portland Castle.

**Parking:** Parking at Mulberry Avenue car park, near Portland Castle: Liberty Road, Castletown, Portland DT5 1AZ

“ These stones have been collected from Portland, an island famous for the export of rock and stone. They are all migrants to the island. Brought by the wind and tide, by longshore drift or delivered or dumped by ships over many centuries. I have dived on a wreck sunk in the harbour in the late 1800s, to retrieve a single piece of stone ballast carried to Portland within the now decaying hull, and collected a ‘kelp holdfast’ - a stone detached in a storm and carried here attached to a piece of kelp. Innocuous objects that you might not give a second glance, they are rich in history and geology and unlock another layer of Portland’s history. ”

Artist Alex Hartley’s recent sculptural interventions into the landscape have explored the relationship between the individual and place. They revisit the question ‘where do I belong’. For b-side Alex has searched for a selection of migratory stones: wanderers, or transported foreign rocks, and he is presenting them with their stories of displacement within the confines of twin vitrines. These paired containers are built onto existing platforms, looking out to sea, between the new Portland Marina and the Island’s historic Castletown area - home to Portland’s old dockyard.

**Walk & Talk** **ARTIST TALK** **FREE**

**Date:** Friday 12 September. 4pm - 5pm

**Venue:** Meet at the site of Alex’s artwork on the quayside at Portland Marina. Short walk on level ground finishing at Hotel Aqua, Castletown, DT5 1BD where you can take refreshment.

Join Alex Hartley, along with a geologist and a marine archaeologist on a walk along the harbourside uncovering stories of both arrival and departure as they delve into the layers of history of this significant area of Portland and explore the concepts behind Alex’s work.

**Credits:** Hartley is represented by the Victoria Miro Gallery. With thanks to The Land’s Trust and Groundworks.

Commissioned  
by b-side



# Ellie Harrison & Roshana Rubin Mayhew 26

What is Left? **INSTALLATION** **FREE**

## Photography and audio

**Date & Times:** 5 – 14 September / 10am – 6pm daily

**Location:** 107 Fortuneswell Portland, Dorset DT5 1LU (near Fortuneswell launderette)

Since the beginning of the year, Roshana and Ellie have been travelling the country to photograph 50 people in their own homes with an object they have inherited from a loved one who has died. Earlier in 2014 they visited Portland and worked with thirteen people from the area - meeting participant’s friends, families, pets, hearing incredible stories and drinking volumes of tea in the process.

Forming an exhibition in an empty house of hand-printed photographs coupled with bespoke viewing chairs, recorded interviews and transcribed booklets, this intimately powerful exhibition invites you to take part in the conversation about people lost, objects gained and the continuing relationship between them.

Ellie Harrison is a performance maker and artist living and working in Leeds. Roshana Rubin Mayhew is a photographer and artist based in London.

This exhibition forms part 3 of the Grief Series, a 7 part project which aims to facilitate a space for people to talk about bereavement without shame, but often with humour and often with sadness.

**Guidance:** This exhibition is on many floors and is not accessible to visitors with limited mobility.

**Credit:** Funded by Arts Council England Lottery Grant



# Alistair Gentry 6 9

R\*\*\*\*\* **EVENT** **FREE**

## Encounter and discussion

**Variou**s: 5 – 6 and 10 – 14 September at various festival sites

**Date**: 12 September.\* **Location**: The Cove Inn

**Date**: 13 September.\* **Location**: South Entrance IRC The Verne

Alistair Gentry is a writer and artist or an artist and writer... sometimes other things, too. The work he makes for publication, performance, broadcast and installation is often “subversive” (SFX magazine), at times “startling” (The Independent) and occasionally even “fascinating” (The Times).

He likes creepy old mannequins, broken toys, museums, absurdity, silly costumes, and making technology do things its manufacturers wouldn’t approve of.

\*Look out for times on Facebook and Twitter!



Commissioned  
by b-side

**Underground Movies** **EVENT** **FREE**

**Date**: Saturday 6 September, 1.30 – 2.30pm

**Location**: Meet at the parking area by High Angle Battery and South gate of IRC The Verne for the short walk to the tunnels.

The local Portland taboo about mentioning a certain burrowing animal sometimes makes watching films difficult, because *Oryctolagus cuniculus* plays an important part in so many of the most influential and best loved movies. In the unique subterranean setting of the tunnels beneath the High Angle Battery with power provided by the wonderful Pedal Powered Cinema, Alistair Gentry presents an all bunny, never to be repeated, no plot compilation of big screen appearances by Portland’s fluffiest enemy.

**Guidance**: The tunnels are dark and must be accessed by a small stairway down. Due to the size of the space we can only admit up to 30 people to experience this event. To guarantee your spot please arrive by 1.30 - no latecomers admitted.

“ It’s a Portland tradition that mentioning a certain burrowing animal on the island is taboo. The usual rationalisation is that they undermined the workings of the famous Portland stone quarries. I think there’s an interesting analogy with the way artists are often regarded by the ordinary populations of places upon which they descend for festivals, commissions and other ‘public art’ events. I’m using the image of the taboo animal as a vehicle for discussing the functions and pleasures of art outside of the art gallery, partly by acting as an intermediary between the public and the festival as represented by the other artists. I’ll be dressed as the forbidden creature and making myself visible throughout the festival. I invite people to share with me their views and questions about the festival and their stories about the identity and history of Portland, which I will share back again to other visitors and residents. ”

# Ania Bas 24

Literary Cutlery **INSTALLATION** **FREE**

## Forks, knives and fiction

**Date & Times**: 5 – 14 September / 8am – 6pm Monday – Saturday / 10am – 4pm Sunday

**Location**: The Sugar Loaf Café, 4 Reforme, Easton, Portland, DT5 2AL

Over the Summer Ania Bas was resident artist at Tophill Library and The Sugar Loaf Cafe on Portland, meeting café customers and staff and writing micro narratives together. These micro stories are now engraved on The Sugar Loaf Café’s cutlery to be used on a daily basis during b-side festival. Forks, knives and spoons will carry various narratives: fiction and true stories, tales of loss, mystery, hope, love and death.

Ania Bas is co-founder of The Walking Reading Group, Open School East Associate; she has worked with a number of galleries including: Tate, Whitechapel Gallery, South London Gallery, The New Art Gallery Walsall.

A partnership project with Dorset Libraries funded by Arts Council England Libraries Fund.

“ I create situations that support dialogue and exchange and I test new frameworks of participation. I am interested in ways that narratives shape understanding, mythology and knowledge of places and people. I insert into my work a healthy dose of humour and create art situations that are accessible and easily understood. ”

**Literary Cutlery Festival Brunch** **EVENT**

**Date**: Saturday 6 September, 11am – 12.30pm

**Location**: The Sugar Loaf Café, 4 Reforme, Easton, Portland, DT5 2AL

Just before you head out on the b-side festival trail why not treat yourself to a fantastic festival brunch at The Sugar Loaf Café. Artist Ania Bas will be laying the tables with her specially commissioned Literary Cutlery sets. Cut a pancake with a fork of fiction or spread some butter with a cutting love story.



Commissioned  
by b-side

# b-side Bus Stops

Various Artists **INSTALLATION** **FREE**

**Date & Times:** 28 August – 11 September

**Location:** 7 bus shelter sites on Portland

**On your travels around Portland keep an eye out for artworks replacing adverts at seven bus stops across the island.**

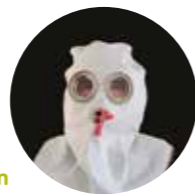
These images were selected from the winning entries for the Evolver Prize – an annual competition for the front cover of Evolver, the Wessex arts and culture magazine. Reproduced as large format posters and installed at bus shelter advertising sites around the island, these works take on a different significance and make the most of the opportunity these sites present for creating an outdoor gallery.

b-side Bus Stops is a partnership with Evolver and Sherborne House Arts (SHA) and is supported by SHA as part of its aim to create opportunities for showing visual art in non-gallery spaces.



**Blonde**  
**Barbara Simons**

High up in the French Pyrenees graze the Comtois – an ancient breed of heavy horse characterised by their bright flaxen manes. Stocky and compact they are perfectly designed to use their strength at work in the woodlands, vineyards and farms of Europe. However, as in this case, they are also bred for their meat. This image captures a point of deep connection, the mood and spirit of the moment.



**Binocular Vision**  
**Henny Burnett**

The Binocular Vision image is part of 'Cicatrix', a WWI centenary exhibition, and was made on a visit to the Defence CBRN Centre in Winterbourne Gunner. It shows a First World War gas mask made of fabric with a cotton ticking lining that gives this military piece of equipment a domestic twist. Using a range of media, Henny's work revolves around the histories and personal stories of a particular place or object and the way these interact with the outside world.



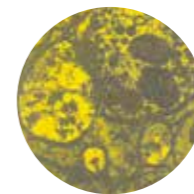
**Exile**  
**Lucas Weschke**

Exile emerged over many months as a response to some of the emotional conflicts in the human condition. It confronts us with fundamental questions about the element of exile that exists in a relationship between parent and child. Lucas makes bold block prints depicting people and animals in a landscape or visual context and exploring themes that touch us all.



**Chair**  
**Zoë Barker**

Chair was taken last year in a large terraced house in North London empty for at least a decade when this image was taken. The property is now undergoing renovation and this poor old chair has doubtless gone to landfill. Zoë is a great believer in the particular qualities of film and shoots with medium and large format cameras. She focuses on finding the beauty in everyday details that are so often over-looked.



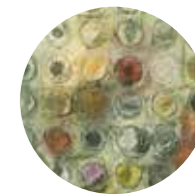
**Mind Fields 1**  
**Jenny Graham**

Mind Fields 1 is a photo-etching created using a combination of an image of the synaptic structure of the human brain with cow parsley exploring the idea of combining microscopic images with natural matter. Jenny is a painter/printmaker whose work explores the timelessness of landforms and the contrast with the interventions of society and agriculture.



**Liminal**  
**Kit Benwell**

Liminal was inspired by the tidal surges of last winter's storms and the indeterminate nature of the constantly shifting point where land meets sea. The work is informed by walks along the Dorset coast observing the impact of the tide and the action of waves and the continuous reshaping and sculpting of the coastline.



**Glimpse**  
**Linn O'Carroll**

Glimpse is a work from a current project investigating nature in close up and looking at the familiar with a child-like sense of wonder, revealing objects we simply take for granted, on a micro scale. Linn is a fine art printmaker whose work focuses on the natural world, environmental issues and community participation.





# Duncan Whitley 12

## Writing of Stones INSTALLATION FREE

### Sound and architecture

**Date & Times:** 5 – 14 September / 10am – 5pm daily

**Location:** St George's CCT Church, Reforme, Wide St, Portland, DT5 2JP

Writing of Stones is a site-specific audio work by Duncan Whitley, created for St George's Church on Reforme. The artist's haunting installation resonates within the fabric of the church - built in the mid-eighteenth century of Portland stone - occupying its pews, galleries and nave with the ethereal and elusive medium of sound. The installation invokes the idea of St George's and its cemetery as a quiet witness to its environment; testament to human and ecological narratives. Informed by obscure tales from Portland history and folklore, its three 'chapters' (The Storm, The Working of Stone, and The Hymn) take us on an abstract journey woven through sound, architecture and memory.

### In the Field ARTIST TALK FREE

**Date:** Sunday 7 September, 2.30pm - 3.30pm

**Location:** St George's CCT Church, Reforme, Wide St, Portland, DT5 2JP.

In the Field features artists Duncan Whitley, Daniel Jones and James Bulley in conversation with each other and the audience. Cecilia Wee (FRSA) will convene, focusing on the motivation, challenges and consequences of site-responsive audio work, where the artist is engaged in an investigation of place, taking into account geography, locality, topography and community.

Dr Cecilia Wee is an independent curator, researcher and tutor in the School of Communication, RCA, London.

**Credits:** Writing of Stones is generously sponsored by Television Film Services: [www.tfsuk.com](http://www.tfsuk.com)

### The Graveyard Shift EVENT FREE

**Date:** Wednesday 10 September, 6.30 - 8pm

**Location:** St George's CCT Church, Reforme, Wide St, Portland, DT5 2JP

A perambulatory tour of St George's cemetery led by artist Duncan Whitley, followed by a concert performance of his work, 'Writing of Stones', in the church as the last light of day disappears. Duncan will share reflections on his experiences of St George's and the cemetery and give some insight into the research processes behind the work. Wear sensible shoes and bring a torch!

Commissioned by b-side



# James Bulley and Daniel Jones 21

## Variable 4 - A composition for weather systems INSTALLATION FREE

### Outdoor sound work

**Date & Times:** 5 – 14 September / 10am – 6pm daily

**Location:** Portland Bill, Portland, Dorset DT5 2JT

Variable 4 is an outdoor landscape sound work composed for Portland Bill which translates weather conditions using meteorological sensors into musical patterns in real time. The weather becomes the conductor, navigating through a map of 24 specifically-written sound movements. James Bulley and Daniel Jones are an artist duo whose collaborative practice explores the boundaries of sound art, music, and process-based composition.

**Guidance:** Head for Portland Bill Lighthouse and follow signs from the car park.

### In the Field ARTIST TALK FREE

See page 15 (opposite page) for details.

### Variable 4 Night time listen EVENT FREE

**Date:** Saturday 13 September, 8pm - 10pm

**Location:** Meet at Portland Bill car park for the short walk to the installation.

As daylight fades into night and the visual stimuli of the world blur into monochrome, sound comes

**Credits:** Thanks to The Crown Estate

and Natural England.

alive and our listening becomes more sensitive, sounds more acute. The closing of the day marks the opening of the acoustic world. Join artists Daniel Jones and James Bulley for a very special night time tour and listening experience of their sound work 'Variable 4' at the tip of Portland overlooking the formidable and turbulent stretch of sea called The Race.

“ We're very excited to be bringing Variable 4 to the island of Portland, after all these months of researching, planning, writing, recording scores and sounds on our trips to the island. The work will take the form of an 8-channel landscape sound installation conducted in real-time by the swirling microclimates down on the end of the Bill and will musically portray different aspects of the surrounding landscape and the cultural histories of the site itself. As the second-by-second weather changes, so will the composition, emanating from across the scattered quarry remnants of Portland stone, overlooking the sea - a truly beautiful location. ”

Commissioned by b-side



# Jeff Pigott and Julia Warin 7

Erosion Zone **INSTALLATION** **FREE**

**Date & Times:** 5 – 14 September / 10am - 6pm

**Location:** The Heights Hotel, Yeates Road, Portland, DT5 2EN

Taking coastal erosion as their theme, artists Jeff Pigott and Julia Warin have set out to explore the issues, misunderstandings and fascinating geological science that makes the Jurassic Coast so unique and beautiful.

This incredible coastline, that we are continually inspired by and sometimes at risk from is not fixed in time, but in a constant state of flux – made evident by the extreme storms, floods and coastal change witnessed this year.

Employing the commercial phenomena of “shopping” Erosion Zone replicates seemingly familiar products, advertising, marketing and the popular media to present an important message - which we cannot own, control or stop nature - or turn it into neat packaged commercial products. We have to learn to live with a changing landscape and embrace the opportunities that this offers us and realise that erosion is the process by which the land is formed and how it continues to evolve.

**Credits:** Exploring Erosion was commissioned by the Jurassic Coast Trust with funds from Arts Council England (Lottery) supported by West Dorset District Council and Dorset Area of Outstanding Natural Beauty. Managed by Bridport Arts Centre on behalf of the Dorset Arts Trust, with support from Dorset County Council.



# Lewis Gibson 15

Lost in Words **EVENT** **FREE**

Performance in a shed

**Date & Times:** 13 – 14 September / Performances at 12pm, 1.30pm, 2.30pm and 4pm both days

**Location:** Easton Square, Portland DT5

A quiet and gentle haven in the hubbub of our busy lives, we bring you a short experience to celebrate the simple things in life. Lewis Gibson's Lost in Words takes place in a garden shed, and will take you on a journey through a good book.

**Credit:** Fuel presents 'The Simple Things in Life, Lost in Words.'

**Guidance:** Lost in Words takes place inside a shed and there are limited places for each performance – you can book on the day at Easton Square but to guarantee a place please pre-register at: [www.b-side.org.uk](http://www.b-side.org.uk)

“ Each shed is a treat in itself: cumulatively, they foster something of the wonderment that floats through childhood days of first discoveries. ”

- The Herald \*\*\*\*\*



# Gobbledegook Theatre

Art Confessional


Portable Confession Booth

**Date:** 5 – 7 September and 11 – 13 September

**Location:** The Art Confessional will find you...

Introducing The Art Confessional, a place to confide about the art which you find most sinful or to divulge those artistic moments which sent you into a heavenly rapture.

The Art Confessional is a portable confession booth in which you can talk about all the work you've seen at b-side 2014 and tell us more about you – so that your artistic sins may be forgiven.



Need help navigating b-side?  
Pick up a free b-side map at all festival sites and venues.



# Pedal Powered Cinema

90 second shorts **EVENT** **FREE** **JOIN IN**

Films by young people from Weymouth & Portland

**Date & Times:** Saturday 13 September / 9pm – 10pm  
**Location:** Outside Cove House Inn, 91 Chiswell, Portland, DT5 1AW

It's back - making a welcome return to the festival this year the cinema that does just what it says on the tin. Come along, enjoy and lend your cycling legs too if you fancy. An evening of new short films screened outside The Cove Inn with the beauty of Chesil beach as your auditorium. Experience an outdoor film screening like no other.

This year we have a series of 90 second short films made by young people from Weymouth & Portland working with film maker Peter Snelling, topped off with the inaugural outside screening of b-side artist Richard DeDomenici's newly redubbed 'Portland Bill Redux' series which promises to be a Cromarty and Dogger all time special.



# Michael Goldberg

A Ticket of Leave **MOBILE INSTALLATION** **FREE**

A roving mobile stone carving studio

**Date & Times:** 5 – 14 September / Between 10am – 6pm daily  
**Location:** Michael will be travelling around Portland in his mobile studio during the festival. You can catch up with him at various Meet The Artist sites (see below).

Michael Goldberg travels from Sydney, Australia to participate in the b-side festival. His project represents a reverse journey - it echoes the passage of convicts in the 1800s who, after labouring in Portland's quarries, were transported to the Antipodes and granted good behaviour 'tickets of leave' that assured their freedom if they became responsible members of Australian society. Much of the limestone quarried by convicts on Portland was used in the construction of London's fine public architecture, and similarly most of Sydney's civic buildings contain blocks quarried by British convicts in the sandstone quarries of Australia. So there exists a certain poetic reciprocity between the two places.

Visitors to the festival will find, if they look carefully, mysterious sandstone 'postcards' brought by Michael from Sydney and secreted in a number of spots around Portland. In a reciprocal gesture during the festival, he will carve a second series of postcards out of Portland limestone particular to the historic places he visits as he travels around the island in his motorhome – a roving, mobile stone carving studio.

**Meet the Artist** **EVENT** **FREE**  
Catch up with Michael at these sites...  
**Portland Bill:** 5, 13 September (pm only)  
**High Angle Battery:** 6, 14 September  
**St Georges Church Car Park:** 7, 8 September  
**National Coastwatch, Portland Bill:** 9 September



**Mulberry Avenue car park (near Portland Castle and Coastguard Helipad):** 10, 11 September  
**Jailhouse Café, IRC The Verne:** 12 September  
**Culverwell Mesolithic site:** 13 September  
**Portland Bill:** 13 September (PM / Evening)



# Paul Soulellis 16

**Portlander** PUBLICATION FREE

A free, public publication

**Date & Times:** 5 – 14 September

**Location:** Pick up a copy at all festival sites and venues.

During June this year New York based artist Paul Soulellis was in residence at Portland Tophill Library, collecting materials for a new publication entitled 'Portlander' - a print-on-demand, community newsprint publication. Out and about on Portland, riding with the mobile library and on various chance encounters Paul gathered stories, images, recipes, myths and snapshots of Portland life from residents to design a multi-layered, diverse expression of local life and history from war heroes to witches.

This brand new participatory publication will be freely distributed on Portland during the festival. Look out for it at Tophill Library and all festival sites and venues.

**Credits:** A partnership project with Dorset Libraries funded by Arts Council England Libraries Fund.

**Meet the Artist** EVENT FREE

**Date:** Saturday 6 September, 10.30am - 12.30pm

**Location:** Tophill Library, Easton, Portland

**Date:** 7 September, 10.30am – 12.30pm

**Location:** Jacksons Gallery, 77 Fortuneswell, Portland, DT5 1LY

Collect your free limited edition PORTLANDER publication direct from the artist himself and say hello to Paul Soulellis.



# Richard DeDomenici 3 6

**Portland Bill Redux** EVENT FREE

Animation

**Date & Times:** 11 – 14 September / Screenings daily during café opening hours.

**Location:** Jacksons Gallery, 77 Fortuneswell, Portland, DT5 1LY.

During the festival Richard DeDomenici will recut and redub episodes of the beloved 1980's animated children's television show Portland Bill so that they accurately reflect the concerns and mores of the people of the Isle of Portland in 2014. Look out for him trawling the Island for potential storylines and new voices to help him create this new series. Could you be the voice of Portland Bill?

What will feature in these reimagined animations? What are the concerns of Portland in the 21st century? Will Dogger and Cromarty encounter any sticky situations?

Catch Richard's new versions of 'Portland Bill' starring the vocal talents of many local people before they are uploaded to the internet: enabling people far and wide to engage with Portland, its unique geography, people, and worldview. Catch the latest cut screening daily at Jackson's Gallery, Fortuneswell too.

“ **Outrageous, hilarious but piercing - a sharp critique of modern myth-making...** ”

– The Scotsman

**Meet the Artist** EVENT FREE

**Date:** Saturday 13 September, 5 – 5.45pm

**Location:** Royal Manor Theatre, 138A Fortuneswell, Portland, DT5 1LT.

Listen to Richard talk about his current work and see the first screening of all five b-side films made during the festival. Hear how he made the 'Portland Bill: Redux' series, his adventures on Portland, who he met along the way and how he decided what Dogger's voice would sound like!

**Outdoor Screening** EVENT FREE

**Date:** Saturday 13 September 9pm – 10pm

**Location:** Outside Cove Inn 91 Chiswell, Portland, DT5 1AW



Commissioned  
by b-side



# Simon Ryder 8 9

## Passage - Part 1 & 2 INSTALLATION FREE Video, sound and sculpture

**Part 1 Date:** 5 – 14 September / 10am – 4:30pm (last entry 4pm)  
**Part 1 Location:** IRC The Verne, South Gate entrance  
**Part 2 Date:** 5 – 7 September & 10 – 14 September / 10am – 3pm  
**Part 2 Location:** Jailhouse Cafe, IRC The Verne, DT5 1EQ

Over the last year Simon has been working with prison staff, a local falconer, squash players and the Bird Observatory on Portland Bill to create a unique installation for the rarely visited historic tunnels and walls of IRC The Verne. 'Passage' brings together nature, heritage and direct experience of being inside the Verne. It includes video, sound and sculpture presented within the walls of the citadel.

**Credit:** Funded by Heritage Lottery Fund. With thanks to IRC The Verne and Expia CIC.

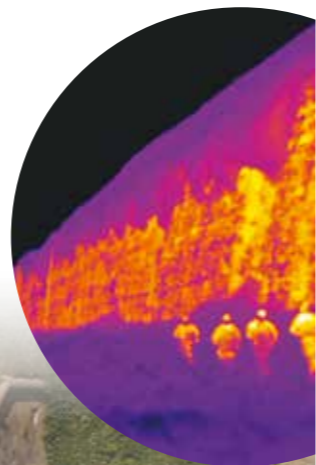
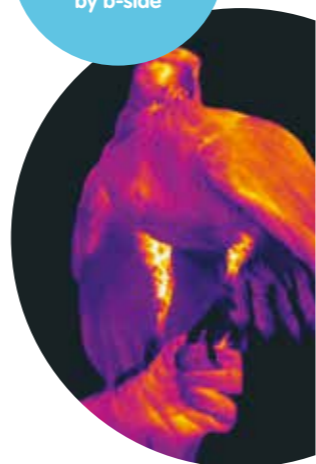
**Installation Guidance:** Part 1 of the installation starts and finishes from IRC The Verne South gate (near The High Angle Battery); the whole walk will take around 30 mins and involves stairs and areas of darkness. Stewards will light your way but please note this route is not accessible for those with limited mobility. Part 2 of the installation is in the Jailhouse Café, which is accessible and has parking.

**Event Guidance:** The installation is sited on three levels, there are spiral staircases and low light levels. This tour is not suitable for those with limited mobility.

**Artist-led Tour** EVENT FREE  
**Dates:** Saturday 6 September, 12 – 1pm  
Saturday 7 September, 12 – 1pm  
Friday 12 September, 2 – 3pm  
Saturday 13 September, 11 – 12pm  
Sunday 14 September, 3 – 4pm  
**Location:** Meet at the South Gate IRC The Verne (follow signs for High Angle Battery)

A very special and rare opportunity to see the other side of this historic prison's fortified walls. Join artist Simon Ryder on a guided tour of his sound, film and sculpture installation and hear more about his year long residency. The tours are free but to guarantee your place please book at the b-side website.

Commissioned  
by b-side



# Tim Spooner 6 20 17

## The Most Extreme Form of Knowledge Magical performing sculpture events

Tim Spooner makes collections of puppets or performing sculptures that aim to expand an understanding of the physical world by revealing something of its inner life. Propelled by the magic of magnetism, vibrating compositions of living and inanimate matter, sound and electricity. For b-side Tim has created a metaphysical puppet show in two parts, to be presented on two opposite sides of the Island – Chesil beach and Church Ope - the most stunning locations at the edges of the land where the sea forms a formidable and breath-taking backdrop to the performance.

“ Tim Spooner is unclassifiable. Meticulous in the assembly and construction of his objects, disconcerting in the implementation of his performances... he offers us a unique, strange and powerful universe... ”

– Renaud Herbin, Director TJP, Strasbourg

**The Most Extreme Form of Knowledge: Scene A** EVENT FREE  
**Date:** Saturday 6 September, 9pm and 10.15pm / Saturday 13 September 2.30pm and 7.30pm  
**Location:** Cove House Inn, 91 Chiswell, DT5 1AW

Join us outside the famous Cove House Inn Pub with the breath-taking backdrop of Chesil Beach for a surreal and magical performing sculpture event.

**The Most Extreme Form of Knowledge: Scene B** EVENT FREE  
**Dates:** Tuesday 9 September, 4pm and Sunday 14 September, 1pm  
**Location:** St Andrews ruin, Church Ope. Park in car park opposite Portland Museum.

Join us within the historic site of St Andrews Ruin above the stunning beach of Church Ope Cove. Witness magnetic forces propel and manipulate strange and absurd creatures in a spell binding puppet show like no other.

**The Most Extreme Form of Knowledge: Scene B Twilight Performance** EVENT FREE  
**Date:** Sunday 7 September, 7 – 8pm  
**Location:** Meet outside Portland Museum, 217 Wakeham, Portland DT5 1HS for the short walk down to St Andrews ruin, Church Ope, Portland.

A lantern lit walk into the woods leading to an old ruined church sometimes known as the pirate's graveyard - high on the cliff edge, overlooking the breath taking Church Ope cove. Here in the fading light experience a parallel universe of magnetically propelled performing puppets moved by invisible forces and created for Portland by artist Tim Spooner.

**Guidance:** The route to St Andrew's ruin is not accessible for people with limited mobility. The walk includes a steep and sometimes slippery slope, please wear suitable foot wear for walking, and bring a blanket or chair to sit on. All performances last approximately 20 mins.

Commissioned  
by b-side



# Tom Marshman 3

## Everybody's Auditorium EVENT FREE Performance

**Date & Times:** Sat 6 September, 4pm and 7pm / Sun 7 September, 2pm and 5pm /  
Weds 10 September, 2pm and 7pm / Thurs 11 September, 7pm / Sat 13 September, 3pm /  
Sun 14 September, 3pm.

**Location:** Royal Manor Theatre, 138A Fortuneswell, Portland DT5 1LT

Take your seat on the stage of the glorious Royal Manor Theatre and listen to the stories of the sponsored seats as they reveal their secrets, hopes and histories.

Over the past year, artist Tom Marshman has been gathering ordinary and extra-ordinary stories from the people of Portland. Working with The Royal Manor Theatre, Tom approached individuals as part of the theatre's 'Sponsor a Seat' Campaign, which led to some unique encounters. This intimate, humorous and often moving series of performances brings the local world into the theatre, where the neighbourhood is the plot and inhabitants its characters. A fisherman, a historian, a head teacher, an environmental campaigner... this is their story.

Tom has been a practising performance artist for over fifteen years, and created over 20 projects in

a wide range of medium including performance, photography, installation, publication and film.

**Guidance:** Duration 80 mins. Seats are strictly limited to 20 for each performance. Advance booking recommended. Doors open 30 mins before all performances.

**Tickets:** £3.50 per person or £10 Family ticket (4 people - your own mix of adults and under 18's). Each ticket is entered into our special b-side prize draw to win a delicious lunch for 4 at Jackson's Gallery, Fortuneswell, Portland valid until the end of October 2014.

**To book tickets:** Please book via b-side website - [www.b-side.org.uk/events/everybodiesauditorium](http://www.b-side.org.uk/events/everybodiesauditorium)

Commissioned  
by b-side



# Luke Jerram 13

## Lullaby EVENT FREE JOIN IN Illuminated night time bike ride

**Date & Times:** 5 September / 7:30pm

**Location:** Meet outside St George's Community Centre, Reforne, Portland, Dorset DT5 2AW

b-side kicks off our most memorable festival yet with this amazing and magical group event, involving people, illuminated bikes and a lullaby. Lullaby is a gift to a place, a surround sound illuminated artwork, made by its own citizens and delivered at dusk, to the public's door by bicycle.

At dusk, when the streets are quiet and empty a child is woken by strange and ethereal music. A shoal of twinkling lights seen in the distance is getting closer. Only as the mass of illuminated bikes pass their house will they realise that the music is coming from speakers attached to dozens of decorated bikes producing the most ambient and serene music composed by established Bristol musician Andy Taylor.

Living in the UK but working internationally, Luke Jerram has created a number of extraordinary art projects over 17 years which have excited and inspired people around the globe. He is Visiting Senior Research Fellow at CFPR, University of West of England.

**Guidance:** Lullaby is suitable for anyone who can ride a bike safely on the road, under 16's must be accompanied by an adult, tag-alongs and child seats are allowed too. The route for Lullaby will last one hour approximately and is an easy bike ride around the Easton and Weston areas of Portland with few hills.

“ A big thank you for organising this ride. One of the best ever cycle related events I have participated in. The joy it brought to both riders and spectators as a memory will linger longer than most. ”

**Join in:** Want to be part of this memorable experience? Pre-register to take part in Lullaby at our website. All you need is a bike, an assortment of lights to decorate yourself and one hour of your time.

**Visit** [www.b-side.org.uk/events/lullaby](http://www.b-side.org.uk/events/lullaby)





## b-side bursaries

3 artists were awarded b-side bursaries in 2013. The bursaries were launched via an open call to South West based artists, and aim to provide opportunities for early career artists or those wishing to shift or redefine their practice to explore site specific work.

### Emma Riley 10

#### Ferrous (2014) INSTALLATION FREE Sculptural Interventions

**Date & Times:** 5 – 14 September / 10am – 6pm daily  
**Location:** Fancy's Farm, Glacis, New Ground, Portland, DT5 1FR (head towards High Angle Batteries and follow signs)

This body of work has been created in response to the landscape and history of Portland. A landscape surrounded by sea and shaped by both agriculture and industry – Ferrous responds to that landscape using Portland wool (from the only flock of Portland sheep remaining on the Isle), iron waste left from quarrying machinery, sea water, stone and time. The Portland fleece is processed and handspun by Emma, and used to create a fabric that weaves a narrative, echoing Portland's past and present; reflecting on what the Isle once was and what it is now.



**Guidance:** Find Emma's installation at the former Centimetric Early Warning Radar Station. Situated high above the Portland coastline with spectacular views, the site is now Fancys Family Farm and home to the only flock of rare breed Portland sheep that supplied the wool for her work.

### Isla Chaney 18

#### Untitled INSTALLATION FREE Sculptural interventions

**Date & Times:** 5 – 14 September, 11am – 5pm daily  
**Location:** East Weares (follow signs from Church Ope viewing platform, near Rufus Castle towards East Weares), Portland

Isla makes intriguing structures that are contemplative and deliberately ambiguous. Concerned with the internal architecture of things they focus on the patterns of growth and transformation inherent to all natural phenomena.

The walk to Isla's work on the East Weares will take you through some of the most breath taking and unique rocky landscape created through landslips and quarrying.

**Guidance:** Isla's work is situated near the old stone fisherman's hut at Durdle Pier on the east side of the island. Follow the signs from Church Ope viewing platform, near Rufus Castle. The walk takes 25 mins along a rough and winding path. The site is not accessible to those with limited mobility. We recommend wearing suitable footwear.

### Leah Crews 25 ♿

#### Postcards to Locals INSTALLATION FREE Hand-printed linocut books

**Date & Times:** 5 – 14 September (except 8 September), 10 – 4pm.  
**Location:** Jacksons Gallery, 77 Fortuneswell, Portland DT5 1LY

Leah Crews works with linocut print technique to create images that explore locality and the bonds we form with places.

A visit to Portland last year became the starting point of her project 'Postcards to Locals' which involved creating hand-printed postcards based on alternative tourism and the unnoticed everyday aspects of a place. These postcards were then sent to residents of the area with personalised messages and memories of experiences, some residents sent their own postcards back to Leah too – see all the postcards at [www.postcardstolocals.tumblr.com](http://www.postcardstolocals.tumblr.com).

Leah's work for the festival involves a series of hand-printed linocut books based on residential streets of Fortuneswell, full of meaning and memories for the people that inhabit them.



# These Are The Damned <sup>3</sup>

(1963) **EVENT** **FREE**  
Film Screening

**Date & Times:** Tuesday 9 September, 8 – 9.30pm

**Location:** Royal Manor Theatre, 138A Fortuneswell, Portland, DT5 1LT

**Tickets:** £2.50 in advance at [www.b-side.org.uk/events/these-are-the-damned](http://www.b-side.org.uk/events/these-are-the-damned)  
or £3.50 on the door

Black leather, black leather,  
Smash smash smash,  
Black leather, black leather,  
Crash crash crash...

An iconic Hammer horror film set and filmed in Weymouth and Portland starring Shirley Ann Field and a young and superbly glowering Oliver Reed. Like many Hammer horror films it deals with outsiders who find themselves enmeshed in the peculiar goings-on in a strange place. However, this predictable genre is turned on its head, in this case by transforming what at first seems an odd but basically conventional thriller into a movie about repressed incestuous impulses, fear of nuclear destruction, distrust of government, the inhumanity of scientific research, existential angst and the social disintegration of the modern world - don't miss!

“ The highpoint of the first wave of the British postwar Science Fiction films. ”

- The Aurum Film Encyclopedia



# The People Speak <sup>6</sup> <sup>12</sup> <sup>13</sup> <sup>14</sup> <sup>15</sup>

Talkaoke: A tool for the world to take over itself **EVENT** **FREE** **JOIN IN**  
Pop up game show

**Date & Time:** Friday 5 Sept, 7.30 – 9.30pm

**Location:** St Georges Hall, Reforme, DT5 2AW

**Date & Time:** Saturday 6 Sept, 12.30 – 2.30pm

**Location:** Easton Gardens

**Date & Time:** Saturday 6 Sept, 9.15pm – 10pm

**Location:** Outside Cove House Inn, 91 Chiswell, DT5 1AW

**Date & Time:** Saturday 13 Sept, 11am – 1pm

**Location:** Easton Gardens

**Date & Time:** Saturday 13 Sept, 9.30pm – 10.30pm

**Location:** The George, 133 Reforme, Portland, DT5 2AP

Coming to b-side this year is Talkaoke - a spontaneous, pop-up talk-show set around the unique 'Talkaoke Table' or 'UFO of chat'. Hosted by The People Speak once the Talkaoke table arrives they'll get conversations and talk going in no time. Want to share a point of view? Discuss a hot topic? The table is yours, we're listening.

The People Speak create projects that give people an excuse to enjoy speaking to each other. The formats look familiar at first: a game show, a chat show or even a game of footie, but once people are involved, there's no limit to where they can take each other.





## Simon Faithfull 4

### 13 Fathoms EVENT FREE Performance Lecture

**Date & Times:** Friday 12 September, 5.30 – 6.30pm  
**Location:** The Aqua, Castletown, Portland, DT5 1BD

Simon Faithfull leads this rambling discursive essay by telling 13 tales of things below the surface of the sea - scientific curiosities, myths and legends of the deep and the strange politics of the ocean floor.

Simon Faithfull's new collaborative commission, REEF, begins this August off the UK's South coast, where a boat will be towed out to sea from Portland, deliberately set on fire and sunk. Five cameras mounted on board will transmit live to the world as the boat makes its final journey to the bottom of the sea. The cameras will then remain transmitting for a year via a dedicated website, with the images relayed to exhibition installations in Brighton, Calais and Caen. Over this year the viewers will witness images from a watery underworld that show the ship slowly starting its metamorphosis from ship to artificial reef. REEF poetically explores the idea of collapse and renewal and leaves a positive lasting legacy for marine biodiversity.



## A Night of Flotsam & Jetsam 3

### Cabaret EVENT

**Date & Times:** Thursday 11 September, 9pm – 10.30pm  
**Location:** The Royal Manor Theatre, 138A Fortuneswell, Portland DT5 1LT  
**Tickets:** £3.50 in advance or £5 on the door  
Book tickets online at [www.b-side.org.uk](http://www.b-side.org.uk)

Treat yourself to a night of cabaret to remember. An evening that brings together some of the artists from b-side Festival, presenting their other talents and interests joined by a few select acts from Portland locals.

Expect variety and randomness, imagine 'Britain's Got Talent' cast overboard, curiously weathered by the sea, crusted with intrigue, dredged up with an unsuspecting fisherman's haul to delighted onlookers, and you are halfway there. An evening of delights and oddity all wrapped up in one of Portland's most beautiful venues.

## Electric Broom Cupboard 3

### Haiku Salat, The Levels and Special Guests EVENT Contemporary instrumental music, projections & interventions

**Date & Times:** Friday 12 September, 8pm – 10pm  
**Location:** Royal Manor Theatre, 138A Fortuneswell, Portland DT5 1LT  
**Tickets:** : £8.50 in advance £10 on the door. Doors open 30 mins before the performance.

The Electric Broom Cupboard presents an evening of contemporary instrumental music, projections and interventions, featuring Haiku Salat, The Levels and Special Guests performing live at the intimate Royal Manor Theatre. All 98 audience members will receive a limited edition numbered EBC souvenir pack on arrival.

### Haiku Salat:

“ Their debut album... a delicious little thing. ”

- Michael Hann, The Guardian

“ Beyond gorgeous... gobsmackingly stunning. ”

- Helen Clark, Music OMH

“ Baroque-pop-folktronic-neo-classical-something-or-other. ”

- Wikipedia

### The Levels:

“ Throbbing basslines underpin jazzy rhythms and space-age surf guitar while a series of retro-kitsch images flicker across the back wall. ”

- Monkton Wyld, Yeovil Live Magazine

...and Special Guests!





# SHOE BUSINESS

There's no business like it!

- ★ FOR ALL YOUR FOOTWEAR NEEDS
- ★ LATEST STYLES
- ★ SPECIAL PROMOTIONS

OPENING ON PORTLAND  
 Saturday 13 September 11am – 2pm  
 For location see [www.b-side.org.uk](http://www.b-side.org.uk)

EXCLUSIVE COLLECTION OF  
 LATE SEASON SPECIALS  
 FROM



For more details about Shoe Business, visit  
[www.b-side.org.uk/shoes](http://www.b-side.org.uk/shoes)

## b-side archive: Portland Colour Chart

Influenced by a unique object 'discovered' in an attic in London in the late 1990's, The Portland Colour Chart shown here forms part of a diptych created by Artist Stig Evans for our 2012 festival. The original library of 42 colour 'swatches' housed in a hardwood box appeared to reveal a personal recording of the distinctive and unique colour found on Portland. Stig Evans engaged the public in making their own version of this curiosity by asking them to give names to the colours to form a modern colour Library. The winning entries each received a prize of their own pot of paint.

Visit [www.portlandcolourchart.co.uk](http://www.portlandcolourchart.co.uk) for details.

Here we show the winning names and their explanations:

1. Grass colour surrounding John Maynes Earthworks, Chiswell
2. Verne Prison, 'Is the grass greener on the other side'
3. The sailing Olympics 2012
4. Britain's only prison ship moored in Portland Harbour
5. Tophill Quarry
6. A plant common to the area
7. You can't mention the other word
8. Sea smoothed pieces of glass found on the local beaches
9. Old field system found on the Island
10. North west cliffs
11. Mechanisms in the quarrying of the famous Portland stone
12. In memory of a well loved local resident who lived in Artists Row



13. The smuggling history on Portland
14. Unique local fishing boat
15. Inspired by the famous stones on Chesil Beach
16. Young Offenders Institute, The Grove.
17. A plant common to the area
18. Another plant common to the isle
19. Also a plant common to the area
20. The famous rescue helicopter
21. The important lighthouse
22. The name Thomas Hardy gave to the Portland
23. A butterfly only found here
24. Inspired by the greens near St Georges Church
25. A local reference to the ridges the tide makes on Chesil Beach

26. Inspired by the short grass that grows on the cliffs
27. The famous rock at the southern end of the Island
28. South eastern area of the island
29. Local name for squid and the colour of the café with the same name
30. Drain runs from Verne to Balaclava, source unknown
31. Dangerous area of water off Portland
32. Narrow strip of land connecting two land areas with water on either side
33. Dangerous area of water off Portland
34. Underwater extension off Portland Bill
35. A bay on the west side



Title	Location	Fri 5th	Sat 6th	Sun 7th
A Night of Flotsam and Jetsam <sup>3</sup>	Royal Manor Theatre, 138A Fortuneswell, Portland, DT5 1LT			
Agnieszka Kozłowska - Re-presencing the Island <sup>22</sup>	Stone Fisherman's Hut, Durdle Pier, East Weares	11am - 5pm	11am - 5pm	11am - 5pm
Agnieszka Kozłowska - Re-presencing the Island <sup>17</sup>	Portland Museum			10.30am - 4pm
Agnieszka Kozłowska - A Wild Weares Walk <sup>18</sup>	Meet at Church Ope Viewing Point			
Alex Hartley - Portland Erratics <sup>2</sup>	Between Portland Marina and Portland Castle	All day	All day	All day
Alex Hartley - Artist Walk & Talk <sup>2</sup>	Meet at the site of Alex's artwork on quayside at Portland Marina			
Alistair Gentry - R*****	Various	Various	Various	
Alistair Gentry - R***** <sup>9</sup>	South Entrance IRC The Verne			
Alistair Gentry - R***** <sup>6</sup>	The Cove Inn			
Alistair Gentry - Underground Movies <sup>11</sup>	Meet: High Angle Battery / South Gate of IRC The Verne		1:30 - 2:30pm	
Ania Bas - Literary Cutlery <sup>24</sup>	The Sugar Loaf Café, 4 Reforne, Easton, Portland, DT5 2AL	8am - 6pm	8am - 6pm	10am - 4pm
Ania Bas - Literary Cutlery Festival Brunch <sup>24</sup>	The Sugar Loaf Café, 4 Reforne, Easton, Portland, DT5 2AL		11am - 12:30pm	
In The Field <sup>12</sup>	St. George's CCT Church, Reforne, Wide St, Portland, DT5 2JP			2.30 - 3.30pm
b-side Bus Stops	7 bus shelter sites around Portland	All day	All day	All day
Duncan Whitley - The Graveyard Shift <sup>12</sup>	St. George's CCT Church, Reforne, Wide St, Portland, DT5 2JP			
Duncan Whitley - Writing of Stones <sup>12</sup>	St. George's CCT Church, Reforne, Wide St, Portland, DT5 2JP	10am - 5pm	10am - 5pm	10am - 5pm
Electric Broom Cupboard <sup>3</sup>	Royal Manor Theatre, 138A Fortuneswell, Portland, DT5 1LT			
Ellie Harrison & Roshana Rubin Mayhew - What is Left? <sup>24</sup>	107 Fortuneswell, 107 Fortuneswell, Portland, Dorset DT5 1LU	10am - 6pm	10am - 6pm	10am - 6pm
Emma Riley - Ferrous <sup>10</sup>	Fancy's Farm, Glacis, New Ground, Portland DT5 1FR	10am - 6pm	10am - 6pm	10am - 6pm
Gobbledegook Theatre - Art Confessional	The Art Confessional will find you...	All day	All day	All day
Isla Chaney - Unfitted <sup>22</sup>	Near Stone hut, East Weares, Portland	11am - 5pm	11am - 5pm	11am - 5pm
James Bulley & Daniel Jones - Variable 4 - A composition for weather systems <sup>21</sup>	Portland Bill, Portland, Dorset DT5 2JT	10am - 6pm	10am - 6pm	10am - 6pm
James Bulley & Daniel Jones - Variable 4 - Night time Listen <sup>21</sup>	Portland Bill, Portland, Dorset DT5 2JT			
Jeff Pigott & Julia Warin - Erosion Zone <sup>7</sup>	The Heights Hotel, Yeates Road, Portland, DT5 2EN	10am - 6pm	10am - 6pm	10am - 6pm
Leah Crews - Postcards to Locals <sup>25</sup>	Jacksons Gallery, 77 Fortuneswell, Portland, DT5 1LY	10am - 4pm	10am - 4pm	10am - 4pm
Lewis Gibson - Lost In Words <sup>15</sup>	Easton Square, Portland, DT5			

[View more overleaf](#)

Mon 8th	Tues 9th	Weds 10th	Thurs 11th	Fri 12th	Sat 13th	Sun 14th	More info	Price
			9pm - 10.30pm				Page 27	From £3.50
11am - 5pm	11am - 5pm	11am - 5pm	11am - 5pm	11am - 5pm	11am - 5pm	11am - 5pm	Page 4	Free
10.30am - 4pm	10.30am - 4pm	10.30am - 4pm	10.30am - 4pm				Page 4	Free
	11am - 1pm					10am - 12pm	Page 4	Free
All day	All day	All day	All day	All day	All day	All day	Page 5	Free
				4pm			Page 5	Free
		Various	Various	Various	Various	Various	Page 7	Free
					Various		Page 7	Free
				Various			Page 7	Free
8am - 6pm	8am - 6pm	8am - 6pm	8am - 6pm	8am - 6pm	8am - 6pm	10am - 4pm	Page 8	Free
							Page 8	Free
							Page 11	Free
All day	All day	All day	All day				Pages 9 - 10	Free
		6:30 - 8pm					Page 11	Free
10am - 5pm	10am - 5pm	10am - 5pm	10am - 5pm	10am - 5pm	10am - 5pm	10am - 5pm	Page 11	Free
				8pm - 10pm			Page 28	From £8.50
10am - 6pm	10am - 6pm	10am - 6pm	10am - 6pm	10am - 6pm	10am - 6pm	10am - 6pm	Page 6	Free
10am - 6pm	10am - 6pm	10am - 6pm	10am - 6pm	10am - 6pm	10am - 6pm	10am - 6pm	Page 23	Free
			All day	All day	All day		Page 14	Free
11am - 5pm	11am - 5pm	11am - 5pm	11am - 5pm	11am - 5pm	11am - 5pm	11am - 5pm	Page 24	Free
10am - 6pm	10am - 6pm	10am - 6pm	10am - 6pm	10am - 6pm	10am - 6pm	10am - 6pm	Page 12	Free
					8 - 10pm		Page 12	Free
10am - 6pm	10am - 6pm	10am - 6pm	10am - 6pm	10am - 6pm	10am - 6pm	10am - 6pm	Page 13	Free
	10am - 4pm	10am - 4pm	10am - 4pm	10am - 4pm	10am - 4pm	10am - 4pm	Page 24	Free
					12pm, 1.30pm, 2.30pm, 4pm	12pm, 1.30pm, 2.30pm, 4pm	Page 14	Free

[View more overleaf](#)

What's on

Title	Location	Fri 5	Sat 6	Sun 7
Luke Jerram - Lullaby <sup>13</sup>	Meet outside St Georges Centre, Reforme, DT5 2AW	7:30pm		
Michael Goldberg - A Ticket of Leave (Meet the Artist) <sup>23</sup>	Portland Bill and Coastwatch, Portland, Dorset DT5 2JT	10am - 6pm		
Michael Goldberg - A Ticket of Leave (Meet the Artist) <sup>12</sup>	St Georges CCT Church, Reforme, Wide St, Portland, DT5 2JP			10am - 6pm
Michael Goldberg - A Ticket of Leave (Meet the Artist) <sup>8</sup>	Jailhouse Cafe, IRC The Verne, Portland, DT5 1EQ			
Michael Goldberg - A Ticket of Leave (Meet the Artist) <sup>11</sup>	High Angle Battery		10am - 6pm	
Michael Goldberg - A Ticket of Leave (Meet the Artist) <sup>5</sup>	Mulberry Avenue Car Park (near Portland Castle)			
Paul Soulellis - Meet the Artist <sup>16</sup>	Tophill Library, Easton, Portland		10:30 - 12:30pm	
Paul Soulellis - Meet the Artist <sup>25</sup>	Jackson Gallery, 77 Fortuneswell, Portland, DT5 1LY			10:30 - 12:30pm
Paul Soulellis - Portlander	Pick up a copy at all festival sites and venues	All day	All day	All day
Pedal Powered Cinema <sup>6</sup>	Outside Cove House Inn, 91 Chiswell, Portland, DT5 1AW			
Richard DeDomenici - Meet the artist <sup>3</sup>	Royal Manor Theatre, 138A Fortuneswell, Portland, DT5 1LT			
Richard DeDomenici - Portland Bill Redux - Daily screenings <sup>25</sup>	Jacksons Gallery, 77 Fortuneswell, Portland, DT5 1LY			
Richard DeDomenici - Portland Bill Redux - Outdoor screening <sup>6</sup>	Outside Cove House Inn 91 Chiswell, Portland, DT5 1AW			
Shoe Business	To be announced - check <a href="http://www.b-side.org.uk/shoes">www.b-side.org.uk/shoes</a>			
Simon Faithful - 13 Fathoms - Performance/Lecture <sup>4</sup>	The Aqua, Castletown, Portland, DT5 1BD			
Simon Ryder - Artist led tour <sup>9</sup>	South Gate, IRC The Verne (follow signs for High Angle Battery)		12 - 1pm	12 - 1pm
Simon Ryder - Passage - Part 1 <sup>9</sup>	IRC The Verne, South Gate entrance	10am - 4:30pm	10am - 4:30pm	10am - 4:30pm
Simon Ryder - Passage - Part 2 <sup>8</sup>	Jailhouse Cafe, IRC The Verne, Portland, DT5 1EQ	10am - 3pm	10am - 3pm	10am - 3pm
The People Speak - Talkaoke <sup>13</sup>	St Georges Centre, Reforme, DT5 2AW	7:30 - 9:30pm		
The People Speak - Talkaoke <sup>15</sup>	Easton Gardens		12:30 - 2:30pm	
The People Speak - Talkaoke <sup>6</sup>	Outside Cove House Inn, 91 Chiswell, Portland, DT5 1AW		9:30 - 10:15pm	
The People Speak - Talkaoke <sup>14</sup>	The George, 133 Reforme, Portland, DT5 2AP			
These Are The Damned (1963) <sup>3</sup>	Royal Manor Theatre, 138A Fortuneswell, Portland, DT5 1LT			
Tim Spooner - The Most Extreme Form of Knowledge Scene A <sup>6</sup>	Outside Cove House Inn, 91 Chiswell, Portland, DT5 1AW		9 / 10:15pm	
Tim Spooner - The Most Extreme Form of Knowledge Scene B <sup>20</sup>	St Andrews Ruin, Church Ope (meet outside Portland Museum)			
Tim Spooner - The Most Extreme Form... Twilight performance <sup>20</sup>	St Andrews Ruin, Church Ope (meet outside Portland Museum)			7 - 8pm
Tom Marshman - Everybody's Auditorium <sup>3</sup>	Royal Manor Theatre, 138A Fortuneswell, Portland DT5 1LT		4 / 7pm	2 / 5pm

Visit [www.b-side.org.uk](http://www.b-side.org.uk) for more details

Mon 8	Tues 9	Weds 10	Thurs 11	Fri 12	Sat 13	Sun 14	More info	Price
							Page 22	Free
	10am - 6pm				6pm - 10pm		Page 16	Free
		10am - 6pm					Page 16	Free
				10am - 6pm			Page 16	Free
						10am - 6pm	Page 16	Free
		10am - 6pm	10am - 6pm				Page 16	Free
							Page 17	Free
All day	All day	All day	All day	All day	All day	All day	Page 17	Free
					9 - 10pm		Page 15	Free
					5 - 5:45pm		Page 18	Free
			10am - 4pm	10am - 4pm	10am - 4pm	10am - 4pm	Page 18	Free
					9:30 - 10pm		Page 18	Free
					11am - 2pm		Page 29	Free
				5:30 - 6:30pm			Page 27	Free
				2 - 3pm	11am - 12pm	3 - 4pm	Page 19	Free
10am - 4:30pm	10am - 4:30pm	10am - 4:30pm	10am - 4:30pm	10am - 4:30pm	10am - 4:30pm	10am - 4:30pm	Page 19	Free
		10am - 3pm	10am - 3pm	10am - 3pm	10am - 3pm	10am - 3pm	Page 19	Free
							Page 26	Free
					11am - 1pm		Page 26	Free
							Page 26	Free
					9.30 - 10.30pm		Page 26	Free
	8 - 9:30pm						Page 25	From £2.50
					2.30 & 7.30pm		Page 20	Free
	4pm					1pm	Page 20	Free
							Page 20	Free
		2 / 7pm	7pm		3pm	3pm	Page 21	From £3.50

Visit [www.b-side.org.uk](http://www.b-side.org.uk) for more details

What's on



## Where's the festival?

b-side festival takes place at sites all over the isle of Portland; we are a scattered site festival without a main festival venue, so it's a great way to experience and see all the island has to offer. We have both installations and events taking place all over Portland in the following areas: Portland Marina, Fortuneswell, Chiswell Esplanade, New Ground, Easton Gardens, Church Ope and Portland Bill.

Portland is a tied island, connected to the mainland by the causeway. If you make your way to any of the above areas you will be within reach of b-side events and installations; please then follow your maps or look for on-site signage. Because of the nature of site-specific work, a few of the sites used are not accessible to those with limited mobility. We have tried our best to indicate this in the guidance but if in doubt please contact the venue in advance or email [info@b-side.org.uk](mailto:info@b-side.org.uk).



**Pick up a free b-side map at all festival sites and venues.**

## Need help?

We have a wonderful group of people on hand to answer your questions, direct you to other b-side events and maybe share with you the best spots on the Island too. Look out for them at all our sites and venues and say hello, they're a friendly bunch.

## Meet the Artist events

Our festival visitors have always loved meeting the b-side artists and finding out more about their work and what inspired them. So this year we have created some special encounters for you with some of our Festival artists. These include: artist talks, walks, tours and screenings. Look out for the 'Meet the Artist' and 'Artist Talk' tags throughout the brochure and festival webpage.

**All events will start promptly at the times stated - so please arrive in good time.**

## Tickets & Bookings

Most events are free but some are ticketed:

All tickets for b-side events at Royal Manor Theatre can be bought online in advance at [www.ticketsource.co.uk/royalmanortheatre](http://www.ticketsource.co.uk/royalmanortheatre) or on the door.

Some free events require you to pre register as there are limited places, please go to [www.b-side.org.uk](http://www.b-side.org.uk) and follow the link on the event page.

**Doors open 30 mins before performances. All events will start promptly at the times stated.**

## Festival Routes

How long have you got? It's never long enough: an intriguing place like Portland will always tempt you to stay longer.

For those with time to stay longer, why not take a long weekend to enjoy everything that Portland has to offer? There are incredible landscape, beaches, coves, restaurants and pubs near most b-side installations and events. We also have some special offers for you.

## Where to stay

There are many great B&B's, cottages and hotels to discover on the island. Some of our local hotels and B&B's have offered special packages for b-side visitors this year as well as a new 'Festival Weekender' offer...

### The Aqua

Castletown, Portland, Dorset DT5 1BD  
**Festival Special:** 40% off single night stays, plus a new B-Side 'Weekender' tariff: stay for any 2 festival nights or more and save an additional 15%. Just quote 'b-side festival' on your booking form:  
[www.hotelacqua.co.uk](http://www.hotelacqua.co.uk)

### Jacksons Gallery B&B

Quote 'b-side festival' for discount off current prices.  
[www.portland77.co.uk](http://www.portland77.co.uk)

### The Heights Hotel

10% off current prices - quote 'b-side' on booking.  
[www.theheightshotel.com](http://www.theheightshotel.com)

For more ideas and links of where to stay on Portland go to [www.b-side.org.uk](http://www.b-side.org.uk)

## How to get here



Trains to Weymouth run from London Waterloo via Southampton Central and Parkway (South West Trains) and from Bristol Temple Meads (First Great Western).

There are taxi cabs outside Weymouth Train Station (a cab to Portland costs roughly £15 one way).

Taxi contact numbers:  
**Weyline:** 01305 777777  
**Portline:** 01305 821600



**From the South and London:** Follow the A35 towards Dorchester, then the A354 signed Weymouth and from then on follow signs to Portland.

**From the West Country:** Follow the signs for Bridport, and then take either the B3157 coast road (signed Abbotsbury) towards Weymouth, or the A35 towards Dorchester. Follow signs to Portland.



Buses run very frequently between Weymouth and Portland. Links to areas further afield are available too such as Dorchester, Exeter and so on.

**Service Number 1** from Kings Statue, Weymouth (runs every 7-8 minutes Mon-Sat daytime and every 20-30 minutes in the evening, and running every 10-15 minutes on Sundays)



Portland is a great place to cycle and it's a fantastic way to see the festival too, for all info on cycle routes in Dorset visit [www.dorsetforyou.com/travel-dorset/cycle/routes](http://www.dorsetforyou.com/travel-dorset/cycle/routes)



# THE BLUEFISH CAFÉ & RESTAURANT

we don't just serve fish ...

**BREAKFAST & LUNCH:**

Friday, Saturday & Sunday from 9.30

**DINNER: Wednesday to Saturday from 6.45**

Come & find us ... 10 minute walk from Weymouth & Portland Sailing Academy, next to Chesil Beach & Free 72 hour car park. All our food is freshly prepared so any allergies can be catered for.

CHISWELL, PORTLAND, DORSET, DT5 1AN  
email: [info@thebluefishrestaurant.com](mailto:info@thebluefishrestaurant.com)  
website: [thebluefishrestaurant.com](http://thebluefishrestaurant.com)

**01305 822991**

# Jackson Gallery

Relax in the beautifully designed gallery space, where you can engage with the exhibits on display, purchase original pieces from the current collections, buy cards and interesting local gifts and unique jewellery.

The Jackson Café & Gallery is open 10am to 5pm Tuesday till Sunday, with a set selection of light lunches every day, alongside a specials board, pizzas on Saturday and on Sunday's a cooked breakfast too!

77 Fortuneswell, Portland, Dorset, DT5 1LY  
01305 826082  
[www.jacksongalleryportland.co.uk](http://www.jacksongalleryportland.co.uk)




<b>Pop Porter</b> GPOps caretakeer race Saturday 11th July The Woolington Shedborne	<b>WHIRL</b> The Original with The CARNATIONS Saturday 1st August The Woolington Shedborne 8.15pm 4.10	<b>THE FLATMATES</b> ROONEY ALLEN and static activity at The Woolington Shedborne Saturday 12th September 8.15pm 4.10	<b>WOLVERTON NEWS</b> There's a place for you SEE <b>THE CHESTERFIELDS</b> automatic damini the caretaker race at several activities Monday 17th November Shedborne 8.15pm with 4.10	<b>EBC</b> COACH TRIP
<b>THE ELECTRIC ROOM</b> (Sponsored) <b>McCARTHY</b> at the Woolington Shedborne Saturday 27th December at the Woolington Shedborne 8.15pm 4.10	<b>EBC</b> 1st Night of 10th Series <b>THE CLOSE LOBSTERS</b> Saturday 24th March at the Woolington Shedborne 8.15pm 4.10	<b>THE POP GUNS : THE PENNY CANDLES</b> SATURDAY 24th MARCH at the Woolington Shedborne 8.15pm 4.10		
<b>The Sea Urchins</b> St Christopher Sunday 8th March The Gardens   Yeovil EBC 1.30.4.30	<b>Becketts</b> Dodgy DJ Alan Flint Wednesday 4th March The Gardens   Yeovil 8.15.10.30pm   4.10	<b>P J HARVEY</b> GUTLESS GREAT DJ Alan Flint Sunday 9th May The Gardens   Yeovil 7.30.10.30pm	<b>Grape</b> with special guests <b>Ideal Husbands</b> and DJ ALAN FLINT FRIDAY 17th DECEMBER PLOWE OF FEATHERS 8.15pm   4.10	
<b>SKOBY</b> Candycaine DJ Alan Flint 28th January Plume of Feathers 8.15pm   4.10	<b>Monkfish</b> Kiska DJ Vegas Nerve 3 1st March Plume of Feathers 8.15pm   4.10	<b>Big Joan</b> Edd Budzynski DJ Vegas Nerve FRIDAY 28th APRIL Plume of Feathers 8.15pm   4.10	<b>EBC</b> Electric Broom Cupboard f	






[www.b-side.org.uk](http://www.b-side.org.uk)

Seen something great? Had a b-side encounter?  
Tell everyone about your b-side on Twitter or post  
your b-side pictures on Instagram using  
the hashtag **#b-side2014**

 bsidefest

 bsidefest



**[EVOLVER]**

